

9.7m Platform Height

- Low exhaust gas emissions.
- Low noise design.
- Compact dimensions and small rear-end swing radius allows entry into tight work sites.
- Excellent inching control provided by pilot hydraulic control system.
- Overload warning system

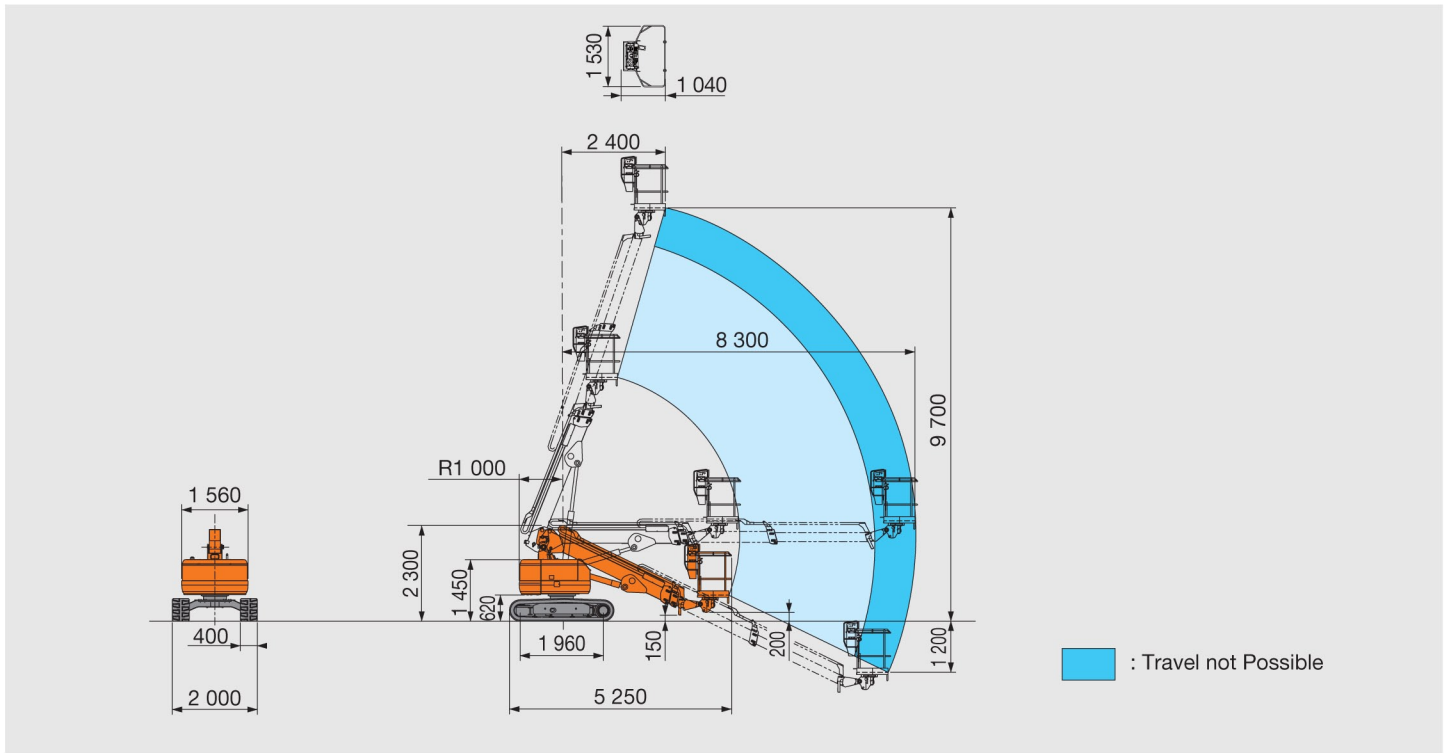
If the load exceeds 120% of the rated load, the overload warning system works to stop normal movements, and warns of overload through the lamp and buzzer.



Operating panel designed for safety (Upper control panel)

Notes : Photos include optional equipment. Some of the photos in this brochure show an unmanned machine with attachments in an operating position. These were taken for demonstration purposes only and the actions shown are not recommended under normal operating conditions.

Unit: mm



SPECIFICATIONS

Model		HX99B-2
Maximum work platform height	mm	9 700
Maximum horizontal reach	mm	8 300
Maximum allowable load	kg	200
Work platform turning angle	degree	90 (either direction)
Machine weight	kg	5 400
Shoe width	mm	400 (rubber shoes)
Speed		
Boom raise/lower	s	raise 40, lower 44
Boom extend/retract	s	extend : 20, retract : 20
Swing	min ⁻¹ (rpm)	0.8 (0.8)
Travel	km/h	high : 1.8, low : 1.1
Work platform turn	degree/s	45 / 4
Engine		
Model		Kubota D1105-K2A
Type		Water-cooled, 3-cylinder swirl combustion chamber type diesel engine
Rated flywheel horsepower	kW/min ⁻¹ (PS/rpm)	13.6 / 2 200 (12.5 / 2 200)
Service refill capacities		
Fuel tank	L	66
Hydraulic oil tank	L	67

Kuipers Grondwerken B.V..

 Haarweg 9
 7651 KE Tubbergen

 T. 0546 - 44 14 23
 F. 0546 - 44 25 94

 E. info@kuipersgrondwerken.nl
 www.kuipersgrondwerken.nl