

Specifications

Model	Z-62/40	
Measurements	Metric	US
Working height maximum*	20.87 m	67 ft 11 in
Platform height maximum	18.87 m	61 ft 11 in
Horizontal reach maximum	12.47 m	40 ft 11 in
Up and over clearance maximum	8.13 m	26 ft 8 in
A Platform length - 8 ft / 6 ft model	0.91 m / 0.76 m	3 ft / 2 ft 6 in
B Platform width - 8 ft / 6 ft model	2.44 m / 1.83 m	8 ft / 6 ft
A Height - stowed	2.56 m	8 ft 6 in
Height - transport (jib tucked under)	2.90 m	9 ft 6 in
D Length - stowed	9.25 m	30 ft 4 in
Length - transport (jib tucked under)	7.58 m	24 ft 10.5 in
E Width	2.49 m	8 ft 2 in
F Wheelbase	2.51 m	8 ft 3 in
A Ground clearance - center	0.37 m	1 ft 2.5 in

Productivity

Lift capacity	227 kg	500 lbs
Platform rotation	160°	160°
Vertical jib rotation	135°	135°
Turntable rotation	360° continuous	
Turntable tailswing	zero	zero
Drive speed - stowed	4.8 km/h	3.0 mph
Drive speed - raised**	1.1 km/h	0.68 mph
Gradeability - 2WD - stowed***	25%	25%
Gradeability - 4WD - stowed***	45%	45%
Turning radius - inside	2.36 m	7 ft 9 in
Turning radius - outside	5.54 m	18 ft 2 in
Controls	12V DC proportional	
Tyres	355/55D 625	

Power

Power source	Deutz D2011L03i 3-cylinder diesel 35.8 kW (48 hp) Perkins 404D-22 4-cylinder diesel 38.0 kW (51 hp)	
Auxiliary power unit	12V DC	12V DC
Hydraulic tank capacity	132.5 L	35 gal
Fuel tank capacity	132.5 L	35 gal

Sound & Vibration Levels

Sound pressure level (ground workstation)	84 dBA	84 dBA
Sound pressure level (platform workstation)	75 dBA	75 dBA
Vibration	<2.5 m/s²	<8 ft 2 in/s²

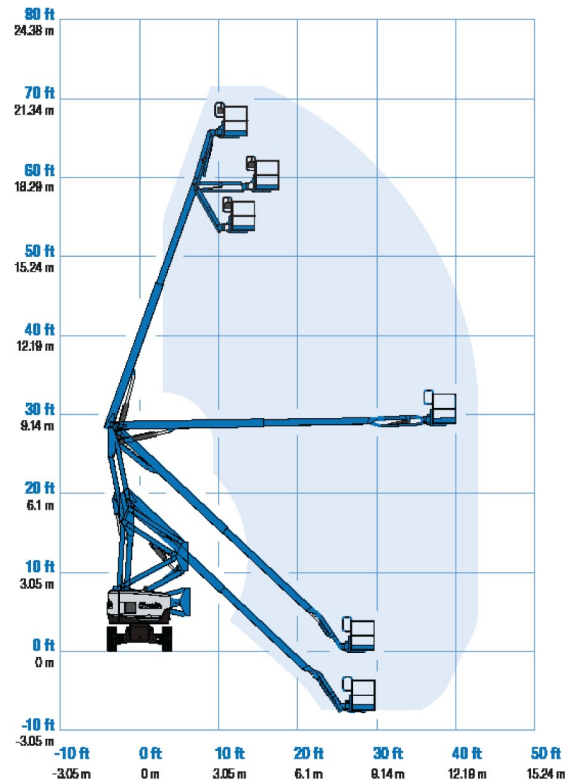
Weight****

CE 4WD (foam filled tyres)	10,548 kg	23,255 lbs
----------------------------	-----------	------------

Standards Compliance

EU Directives: 2006/42/EC - Machinery
 (harmonized standard EN280:2001+A2:2009); 2004/108/EC (EMC); 2000/14/EC (Outdoor Noise)

Range Of Motion Z-62/40

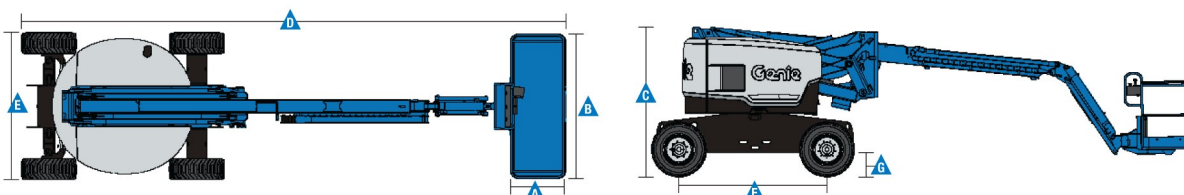


* The metric equivalent of working height adds 2 m to platform height. U.S. adds 6 ft to platform height.

** In lift mode (platform raised), the machine is designed to operate on firm, level surfaces only.

*** Gradeability applies to driving on slopes. See operators manual for details regarding slope ratings.

**** Weight will vary depending on options and/or country standards.



Kuipers Grondwerken B.V.
 Haarweg 9
 7651 KE Tubbergen

T. 0546 - 44 14 23
 F. 0546 - 44 25 94

E. info@kuipersgrondwerken.nl
www.kuipersgrondwerken.nl

Features

Standard Features	Easily Configured To Meet Your Needs	Options & Accessories
<p>Measurements</p> <ul style="list-style-type: none"> • 20.87 m (67 ft 11 in) working height • 12.47 m (40 ft 11 in) horizontal reach • 8.13 m (26 ft 8 in) up and over clearance • Up to 227 kg (500 lbs) lift capacity <p>Productivity</p> <ul style="list-style-type: none"> • Self-levelling platform • Hydraulic platform rotation • Proportional joystick controls • Telematics-Ready Connector • Thumb rocker steering • Drive enable • AC power cord to platform • Horn • Hour meter • Tilt alarm • Descent & travel alarms • Flashing beacon • 360° continuous turntable rotation • Locking turntable covers • Zero tailswing • Positive traction drive • 2 speed wheel motors • Certified load sensor <p>Power</p> <ul style="list-style-type: none"> • 12V DC auxiliary power • Engine protection package • Anti-restart engine protection • Auto engine fault shutdown • Intake air heater (Deutz engine) 	<p>Platform Options</p> <ul style="list-style-type: none"> • Steel 2.44 m (8 ft) (standard) • Steel 1.83 m (6 ft) • 2.44 m (8 ft) tri-entry** <p>Jib</p> <ul style="list-style-type: none"> • 1.52 m (5 ft) jib boom <p>Engine Options</p> <ul style="list-style-type: none"> • Deutz diesel 35.8 kW (48 hp) • Perkins diesel 38 kW (51 hp) <p>Drive Options</p> <ul style="list-style-type: none"> • 2 x 4 • 4 x 4 <p>Axle Options</p> <ul style="list-style-type: none"> • Active oscillation (standard on 4WD) • Non-oscillating <p>Tyre Options</p> <ul style="list-style-type: none"> • Rough terrain air-filled (standard) • Rough terrain foam-filled • Rough terrain non-marking (air or foam-filled) • Sealant treated air-filled 	<p>Productivity Options</p> <ul style="list-style-type: none"> • Platform top auxiliary rail • Weld leads to platform ⁽¹⁾ • Hydraulic oil cooler ⁽²⁾ • Air line to platform • Power to platform (incl. plug, socket and ground fault interrupt leakage on request) • Work lights package (2 on chassis, 2 on platform) • Dual axis joystick steering • Biodegradable hydraulic oil ⁽¹⁾ • Aircraft protection kit ^(1,2); platform foam padding and padded disable system • Hostile environment kit ⁽¹⁾; cylinder bellows, boom wiper seals platform and ground control box covers • Deluxe hostile environment kit ^(1,2) adds to basic kit center turntable shield, ring gear guard, tail pipe guard, engine cover flaps and air pre-cleaner • Tilt cut-out option • Track & Trace ⁽³⁾ (GPS unit providing machine location & operating information) • Panel cradle package ^(1,2) • Lockable platform control box covers • Tool tray • Operator Protective Structure • Operator Protective Alarm <p>Power Options</p> <ul style="list-style-type: none"> • Engine gauge package • AC generator packages (110V/60Hz 220V/50Hz, 3000W) ⁽¹⁾ • Hydraulic MTE Generator kit (110V/120V-220V/240V) • Diesel air intake pre-cleaner ^(1,2) • Diesel catalytic scrubber muffler ⁽¹⁾ • Low temperature cut-out module • Engine heater ⁽²⁾ • Refinery kit with spark arrestor and electric or mechanical Chalwyn valve ⁽²⁾



⁽¹⁾ Factory-fit option only

⁽²⁾ Available on selected models only. See your Genie representative for further information.

⁽³⁾ Includes a first 2 years subscription