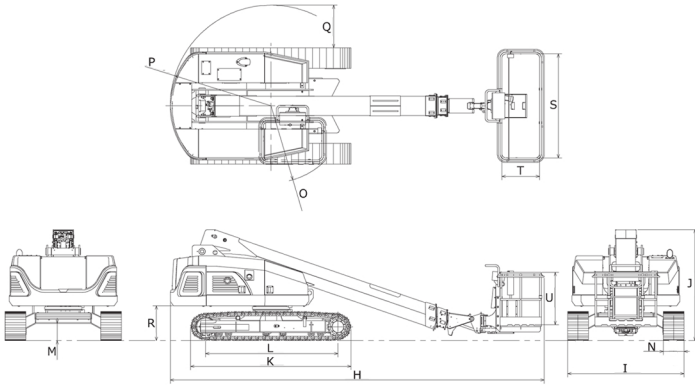
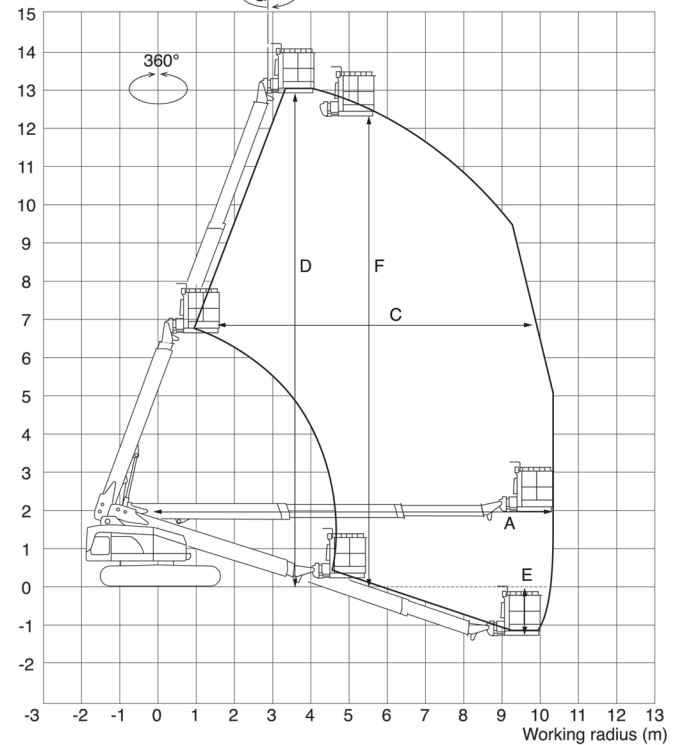


(14 Specifications)

1. Working Range Diagram and Machine Dimensions


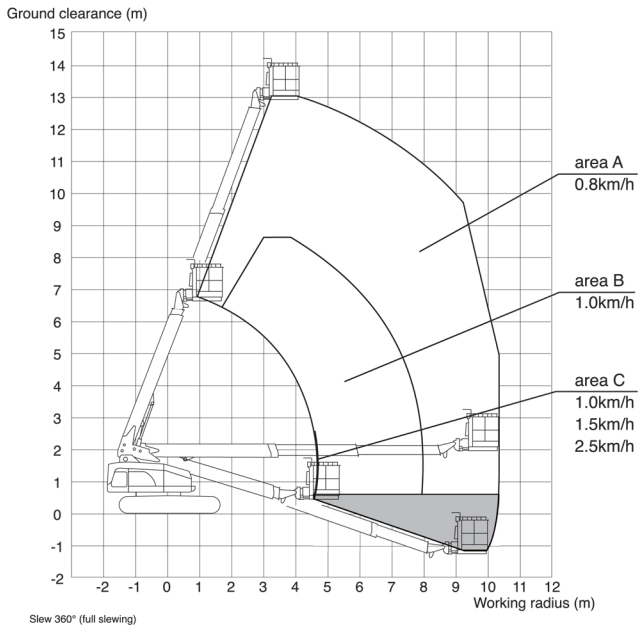
Working range	A	Maximum platform radius	mm	10,300
	B	Minimum platform radius	mm	735
	C	Maximum horizontal movement length (height)	mm	8,150(6,830)
	D	Maximum platform height	mm	13,085
	E	Minimum platform height	mm	1,160
	F	Maximum vertical ascent height	mm	12,400
	G	Platform swing angle (right/left)	°	90/45
Machine dimensions	H	Overall length	mm	7,525
	I	Overall width	mm	2,250
	J	Overall height	mm	2,165
	K	Crawler overall length	mm	3,120
	L	Tumbler centre distance	mm	2,590
	M	Minimum ground clearance	mm	330
	N	Crawler shoe width	mm	400
	O	Minimum turning radius	mm	1,495
	P	Tail swing radius	mm	1,950
	Q	Maximum machine width protrusion at slewing	mm	825
	R	Slewing table bottom height	mm	670
S	Platform inside length, width	mm	(1)1,800 (2)2,100 (3)2,400	
T	Platform inside length, depth	mm	900	
U	Platform inside length, height	mm	1,100	

Ground clearance (m)



Slew 360° (full slewing)

1. In the working range diagram, deflection of the boom is not accounted.
2. The working range diagram shows 360 degrees same in any direction.
3. The working range diagram shows the setting on a level and rigid ground.
4. The counterweight is assumed to be installed to the specified position.

2. Travel Range Diagram

3. Major Specifications

Model		S15Auj (steel crawler belt)	
Name		Crawler telescopic boom aerial platform	
Basic specifications	Maximum movable load	kg	300
	Platform dimensions (W x L x H)	mm	1,800 2,100x900x1,100 2,400
		Maximum platform height	mm
	Machine weight (without PAD)	kg	8,420 (8,180)
Dimensions in transportation	Overall length	mm	7,525
	Overall width	mm	2,250
	Overall height	mm	2,165
Engine	Model	KUBOTA D1305	
	Type	Water cooling 3 cycle diesel	
	Rated output	kW/min ⁻¹ (PS/rpm)	17.5/2,400 (23.8/2,400)
	Slewing speed	sec/360°	55
Maneuverability	Travelling speed (ultra low/low/high/2nd)	km/h	0.8/1.0/1.5/2.5
	Tail swing radius	mm	1,950
	Max/Average ground pressure (with PAD)	kPa (kgf/cm ²)	104/40 (107/41)
Tank	Gradability	% (°)	36(20)
	Hydraulic oil tank	ℓ	50
	Fuel tank	ℓ	100
Noise level	LwA	dB (A)	99
Vibration	Whol-body	m/s ²	<0.5
Work equipment performance			
Operating time	Boom (up/down)	sec	36/40
	Telescopic boom (extend/retract)	sec	26.5/26
	Platform swing (right/left)	sec	15/15

* The operating speed and gradeability show the machine condition with one passenger on a level and rigid ground.
 * The travelling speed and gradeability depend greatly on the condition of the running surface of the road.
 * The movable load and machine weight depend on presence of option attachment. Confirm them with the serial No. plate and load plate.
 * The maximum single side load and maximum ground pressure are approximate values. Presence of option attachment is not accounted.