

Specifications

| Models | S-80 XC | | S-85 XC | |
|---------------------------------------|------------|---------|------------|---------|
| Measurements | US | Metric | US | Metric |
| Working height maximum* | 86 ft | 26.38 m | 91 ft | 27.74 m |
| Platform height maximum | 80 ft | 24.38 m | 85 ft | 25.91 m |
| Horizontal reach maximum | 68 ft 4 in | 20.83 m | 74 ft 6 in | 22.71 m |
| Below ground reach | 5 ft 6 in | 1.68 m | 8 ft 10 in | 2.69 m |
| A Platform length - 8 ft model | 3 ft | 0.91 m | 3 ft | 0.91 m |
| Platform length - 6 ft model | 2 ft 6 in | 0.76 m | 2 ft 6 in | 0.76 m |
| B Platform width - 8 ft model | 8 ft | 2.44 m | 8 ft | 2.44 m |
| Platform width - 6 ft model | 6 ft | 1.83 m | 6 ft | 1.83 m |
| C Height - stowed | 9 ft 2 in | 2.80 m | 9 ft 2 in | 2.80 m |
| D Length - stowed | 37 ft 1 in | 11.3 m | 40 ft 7 in | 12.37 m |
| Length - transport (jib tucked under) | — | — | 38 ft | 11.60 m |
| E Width | 8 ft 2 in | 2.49 m | 8 ft 2 in | 2.49 m |
| F Wheelbase | 9 ft 4 in | 2.85 m | 9 ft 4 in | 2.85 m |
| A Ground clearance - center | 15.8 in | 40 cm | 15.8 in | 40 cm |

Productivity

| | | | | |
|--------------------------------------|----------------------------|----------|----------------------------|----------|
| Maximum lift capacity - unrestricted | 660 lb | 300 kg | 660 lb | 300 kg |
| - restricted | 1,000 lb | 454 kg | 1,000 lb | 454 kg |
| Platform rotation | 160° | | 160° | |
| Vertical jib rotation | — | | 135° | |
| Turntable rotation | 360° continuous | | 360° continuous | |
| Turntable tailswing | 5 ft 3 in | 1.6 m | 5 ft 3 in | 1.6 m |
| Drive speed - stowed | 3.3 mph | 5.4 km/h | 3.3 mph | 5.4 km/h |
| - raised/extended | 0.95 mph | 0.3 m/s | 0.95 mph | 0.3 m/s |
| Gradeability - stowed** | 45% | | 45% | |
| Turning radius: inside | 12 ft | 3.66 m | 12 ft | 3.66 m |
| outside | 21 ft 6 in | 6.55 m | 21 ft 6 in | 6.55 m |
| Controls | 12V DC proportional | | 12V DC proportional | |
| Tires - RT lug | Foam filled 18-625, 16 ply | | Foam filled 18-625, 16 ply | |

Power

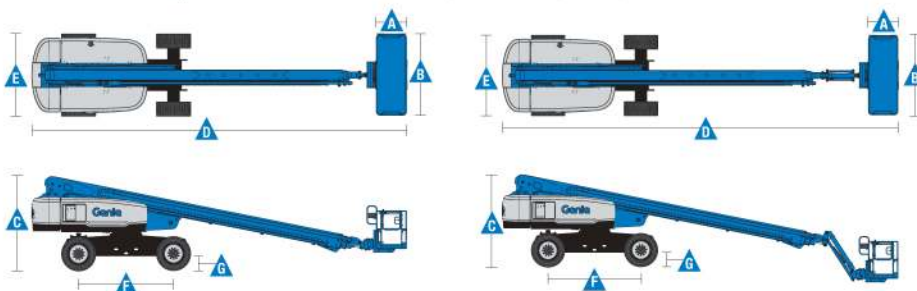
| | | | | |
|-----------------------------|---|-------|--------|-------|
| Power source | 74 hp (55 kW) Deutz turbo diesel, Tier 4f, 2.9 L | | | |
| | 58 hp (43.25 kW) Perkins turbo diesel, Tier 4, 404D-22T | | | |
| | 70 hp (52.2 kW) GM gas/LPG 3.0L | | | |
| Auxiliary power unit | 12V DC | | 12V DC | |
| Hydraulic tank capacity | 40 gal | 150 L | 40 gal | 150 L |
| Fuel tank capacity - diesel | 35 gal | 132 L | 35 gal | 132 L |
| - gas/LPG | 30 gal | 114 L | 30 gal | 114 L |

Weight***

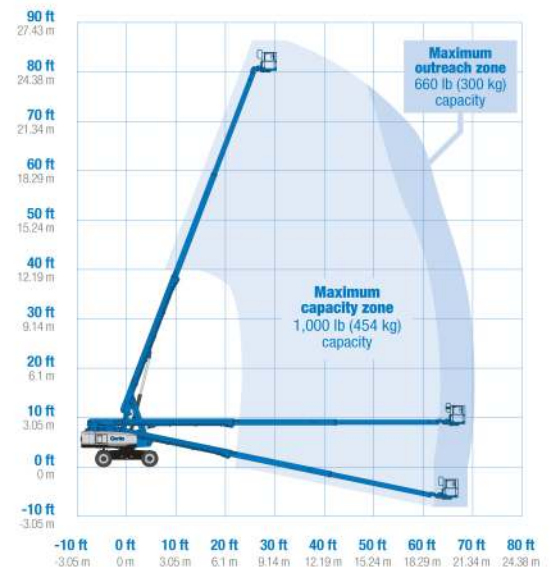
| | | | |
|------------|-----------|------------|-----------|
| 37,000 lbs | 16,783 kg | 39,500 lbs | 17,917 kg |
|------------|-----------|------------|-----------|

Standards Compliance

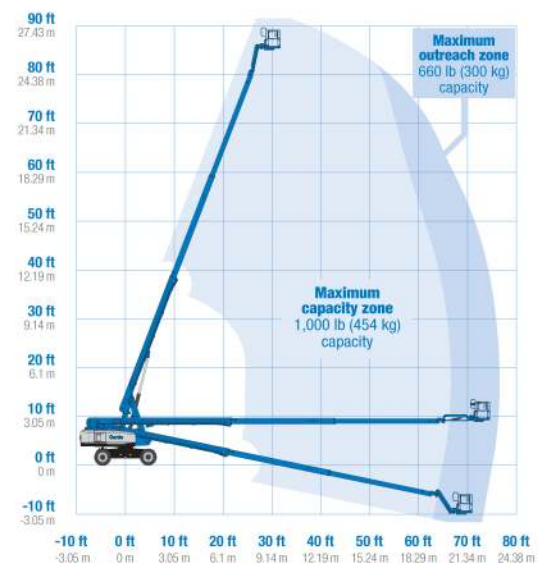
ANSI A92.5, CSA B354.4, EN 280, AS 1418.10



Range Of Motion S-80 XC



Range Of Motion S-85 XC



* The metric equivalent of working height adds 2 m to platform height. U.S. adds 6 ft to platform height.

** Gradeability applies to driving on slopes. See operator's manual for details regarding slope ratings.

*** Weight will vary depending on options and/or country standards.

Features

Standard Features

Measurements

S-80 XC*

- 86 ft (26.38 m) working height
- 68 ft 4 in (20.83 m) horizontal reach
- 660 lbs (300 kg) unrestricted and 1,000 lbs (454 kg) restricted lift capacity

S-85 XC

- 91 ft (27.91 m) working height
- 74 ft 6 in (22.71 m) horizontal reach
- 660 lbs (300 kg) unrestricted and 1,000 lbs (454 kg) restricted lift capacity

Productivity

- Self-leveling platform
- 160° hydraulic platform rotation
- Proportional joystick controls
- Drive enable
- AC power cord to platform
- Horn
- Hour meter
- Tilt alarm
- Descent alarm
- 360° continuous turntable rotation
- Positive traction four wheel drive
- Two speed wheel motors
- Telematics ready connector
- Platform Load sense system
- Entry Toeboard
- Hydraulic oil cooler
- Alarm package
- Work tray
- Lift Guard™ Contact Alarm

Power

- 12V DC auxiliary power
- Anti-restart engine protection
- Auto engine fault shutdown

Easily Configured To Meet Your Needs

Platform Options

- Steel 6 ft (1.83 m) dual entry with side swing gate (standard)
- Steel 8 ft (2.44 m) tri-entry with side swing gate

Jib Options

- Non-jib (S-80 XC only)
- 5 ft (1.52 m) jib boom (S-85 XC only)

Engine Options

- 74 hp (55.18 kW) Deutz turbo diesel T4f** (standard)
- 58 hp (43.25 kW) Perkins turbo diesel T4f**
- 70 hp (52.2 kW) GM gas/LPG

Axle

- Active oscillation

Tire Options

- Rough terrain foam-filled (standard)
- Rough terrain non-marking foam-filled

Options & Accessories

Productivity Options

- Half mesh platform inserts
- Platform top auxiliary rail
- Lift Power™
 - 3 kW AC Generator
 - 12 kW 240 V / 60 Hz Welder Ready package
 - 12 kW Welder Equipped, Select Lincoln or Miller (12 kW options include a fire extinguisher and fireproof sleeves)
- Air line to platform
- Specialty hydraulic oil (cold weather, fire resistant, or biodegradable)
- Hostile environment kit
- Deluxe hostile environment kit
- Aircraft protection package (6 ft platform only)
- Thumb rockersteer
- Panel cradle package
- Lockable platform control box covers
- Tow package
- Work light package
- Operator Protective Structure***
- Fall Arrest Bar

Power Options

- Cold Weather Packages
- Diesel scrubber/muffler (catalytic muffler)
- LPG tank only, steel, 33.5 lb (15.19 kg) capacity
- Intake air pre-cleaner



* Not available on CE machines
 ** Also available as Tier 4i in limited regions
 *** Available through aftermarket parts only

Kuipers Grondwerken B.V.

Haarweg 9
 7651 KE Tubbergen

T. 0546 - 44 14 23
 F. 0546 - 44 25 94

E. info@kuipersgrondwerken.nl
 www.kuipersgrondwerken.nl