

Z-45 DC & Z-45 FE

Specifications

Model	Z-45 DC & Z-45 FE	
Measurements	Metric	US
Working height maximum*	15.92 m	51 ft 8 in
Platform height maximum	13.92 m	45 ft 8 in
Horizontal reach maximum	6.94 m	22 ft 9 in
Up and over clearance maximum	7.50 m	24 ft 7 in
A Platform length	0.76 m	2 ft 6 in
B Platform width	1.83 m	6 ft
C Height - stowed	2.29 m	7 ft 6 in
D Length - stowed	5.87 m	19 ft 3 in
E Width	2.29 m	7 ft 6 in
F Wheelbase	2.03 m	6 ft 8 in
G Ground clearance - center	0.41 m	1 ft 4 in

Productivity

Lift capacity	300 kg	660 lbs
Platform rotation	160°	160°
Vertical jib rotation	135°	135°
Turntable rotation	355° non-continuous	
Turntable tailswing	0.37 m	1 ft 3 in
Drive speed - stowed	7.2 km/h	4.5 mph
Drive speed - raised**	0.5 km/h	0.31 mph
Gradeability - 4WD - stowed***	45%	45%
Turning radius - inside	2.40 m	7 ft 10 in
Turning radius - outside	4.30 m	14 ft 1 in
Controls	24V DC proportional	
Tyres	315/55 D20	

Power

Drive system	34 V 3-Phase AC	
Power source	48 V DC (eight 6V batteries)	
	370 Ah capacity (AGM, standard on FE)	
	390 Ah capacity (FLA, standard on DC)	
	24.8 hp (18.5kW) Kubota D1105 Stage V driven	
	AC generator (FE only)	
Auxiliary power unit	12V DC	12V DC
Hydraulic tank capacity	40 L	10.5 gal
Fuel tank capacity	64.35 L	17 gal

Sound & Vibration Levels

Sound pressure level (ground workstation)	70 dBA (DC) / 80 dBA (FE)
Sound pressure level (platform workstation)	70 dBA (DC) / 76 dBA (FE)
Vibration	0.16 m/s ² (0.52 ft/s ²)

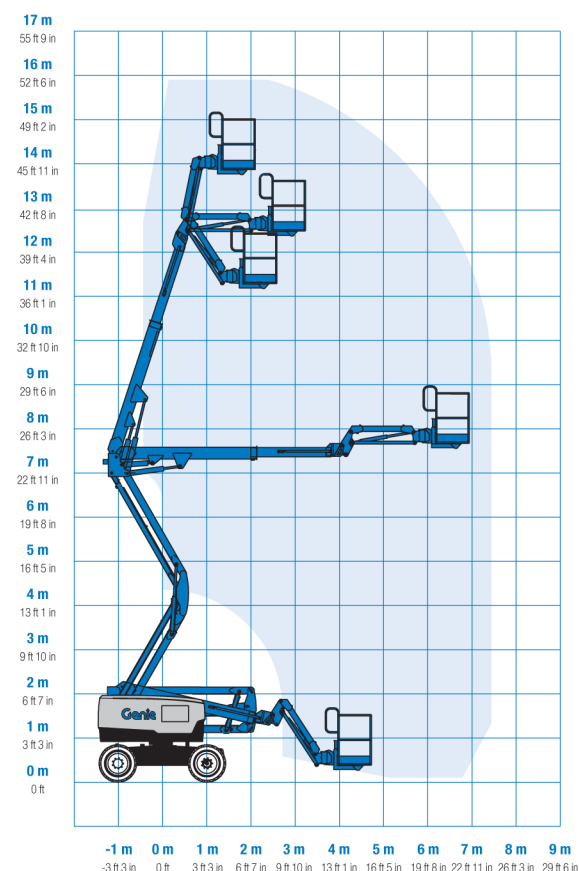
Weight****

Z-45 DC	6,379 kg	14,064 lb
Z-45 FE	6,559 kg	14,460 lb

Standards Compliance

EU Directives: 2006/42/EC - Machinery (harmonized standard EN280), European Emissions Regulation (EU) 2016/1628 Stage V; 2004/108/EC (EMC); 2000/14/EC (Outdoor Noise)

Range Of Motion Z-45 DC & Z-45 FE

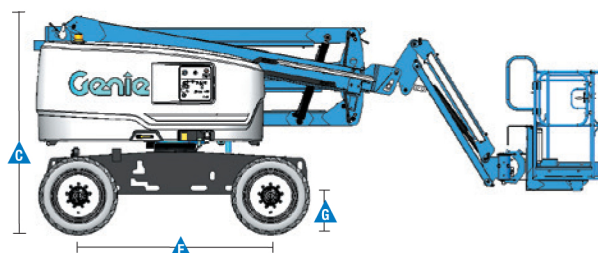
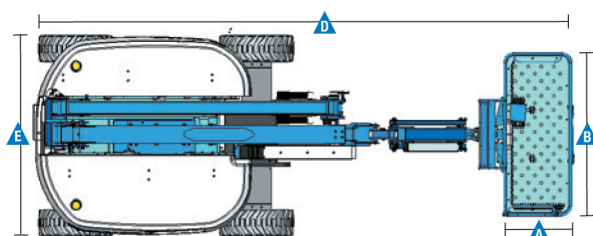


* The metric equivalent of working height adds 2 m to platform height. U.S. adds 6 ft to platform height.

** In lift mode (platform raised), the machine is designed to operate on firm, level surfaces only.

*** Gradeability applies to driving on slopes and may vary depending on options and machine configurations. See operator's manual for details.

**** Weight will vary depending on options and/or country standards.



Z-45 DC & Z-45 FE

Features

Standard Features	Easily Configured To Meet Your Needs	Options & Accessories
Measurements Z-45 DC & Z-45 FE <ul style="list-style-type: none"> 15.92 m (51 ft 8 in) working height 6.94 m (22 ft 9 in) horizontal reach 7.5 m (24 ft 7 in) up and over clearance Up to 300 kg (660 lbs) lift capacity Productivity <ul style="list-style-type: none"> Digital hour meter with battery charge indicator and diagnostic readout 4 Wheel AC electric drive system Variable speed high efficiency hydraulic power unit Self-leveling platform Hydraulic platform rotation Proportional joystick controls Thumb rocker steering Drive enable Chassis tilt drive function cut-out AC power cord to platform Horn Tilt alarm Descent alarm Flashing beacon & travel alarm 355° non-continuous turntable rotation Electronic traction control Dual parallelogram for vertical wall tracking Lift Guard™ Contact Alarm Work tray Power <ul style="list-style-type: none"> 48 V DC battery pack (370Ah AGM maintenance-free) (standard on FE) 48 V DC battery pack (390Ah FLA) (standard on DC) 12V DC auxiliary power 25A temperature compensated smart charge system Battery charge indicator Low battery voltage interrupt 	Platform Options <ul style="list-style-type: none"> Steel 1.83 m (6 ft) dual entry with side swing gate Jib <ul style="list-style-type: none"> 1.52 m (5 ft) jib boom with 135° working range Engine <ul style="list-style-type: none"> 18.5 kW (24.8 hp) Kubota Stage V diesel Drive <ul style="list-style-type: none"> 4WD Electric AC (standard) Axle <ul style="list-style-type: none"> Active oscillation (standard) Tyre Options <ul style="list-style-type: none"> Rough terrain non-marking foam filled (standard) Rough terrain foam-filled 	Productivity Options <ul style="list-style-type: none"> Lift Guard™ Half mesh platform panels⁽¹⁾ Platform auxiliary top rail Air line to platform⁽¹⁾ Power to platform: plug, socket, with optional Residual-current Circuit Breaker with Overcurrent protection Work lights package (2 on chassis, 2 on platform)⁽¹⁾ Dual axis joystick steering⁽¹⁾ Biodegradable hydraulic oil Chassis tilt lift function cut-out (software setting) Panel cradle package Lockable platform control box covers Operator Protective Structure⁽²⁾ Lift Guard™ Fall Arrest Bar⁽²⁾ Power Options <ul style="list-style-type: none"> 2000W 120V/60Hz, 240V/50Hz or 110V/50Hz power inverter 48 V DC battery pack (370Ah AGM maintenance-free) (standard on FE) 48 V DC battery pack (390Ah FLA) (standard on DC)



⁽¹⁾ Factory-fit option only
⁽²⁾ Aftermarket only

Kuipers Grondwerken B.V.

Haarweg 9
 7651 KE Tubbergen

T. 0546 - 44 14 23
 F. 0546 - 44 25 94

E. info@kuipersgrondwerken.nl