

## Z-60 DC & Z-60 FE

### Specifications

Model	Z-60 DC & Z-60 FE	
Measurements	Metric	US
Working height maximum*	20.16 m	65 ft 7 in
Platform height maximum	18.16 m	59 ft 7 in
Horizontal reach maximum	11.15 m	36 ft 7 in
Up and over clearance maximum	7.39 m	24 ft 3 in
Below ground reach	2.46 m	8 ft 1 in
<b>A</b> Platform length - 8 ft / 6 ft model	0.91 m / 0.76 m	3 ft / 2 ft 6 in
<b>B</b> Platform width - 8 ft / 6 ft model	2.44 m / 1.83 m	8 ft / 6 ft
<b>C</b> Height - stowed	2.54 m	8 ft 4 in
Height - transport (jib tucked under)	2.62 m	8 ft 7 in
<b>D</b> Length - stowed	8.15 m	26 ft 9 in
Length - transport (jib tucked under)	6.30 m	20 ft 8 in
<b>E</b> Width	2.49 m	8 ft 2 in
<b>F</b> Wheelbase	2.49 m	8 ft 2 in
<b>G</b> Ground clearance - center	0.33 m	1 ft 1 in

### Productivity

Lift capacity	227 kg	500 lbs
Platform rotation	160°	160°
Vertical jib rotation	135°	135°
Turntable rotation	355° non-continuous	
Turntable tailswing - riser up	0.58 m	1 ft 11 in
Turntable tailswing - riser down	0.81 m	2 ft 8 in
Drive speed - stowed	6.44 km/h	4.0 mph
Drive speed - raised**	1.09 km/h	0.68 mph
Gradeability - 4WD - stowed***	45%	45%
Turning radius - inside	2.51 m	8 ft 3 in
Turning radius - outside	5.69 m	18 ft 8 in
Controls	24V DC proportional	
Tyres	355/55D 625	

### Power

Drive system	34 V 3-Phase AC	
Power source	48 V DC (eight 6V batteries)	
	390 Ah capacity (FLA standard on DC)	
	415 Ah capacity (AGM standard on FE)	
	24.8 hp (18.5kW) Kubota D1105 Stage V driven AC generator (FE only)	
Auxiliary power unit	12V DC	12V DC
Hydraulic tank capacity	68.14 L	18 gal
Fuel tank capacity	64.35 L	17 gal

### Sound & Vibration Levels

Sound pressure level (ground workstation)	70 dBA (DC) / 77 dBA (FE)
Sound pressure level (platform workstation)	70 dBA (DC) / 72 dBA (FE)
Vibration	0.553 m/s <sup>2</sup> (1.81 ft/s <sup>2</sup> )

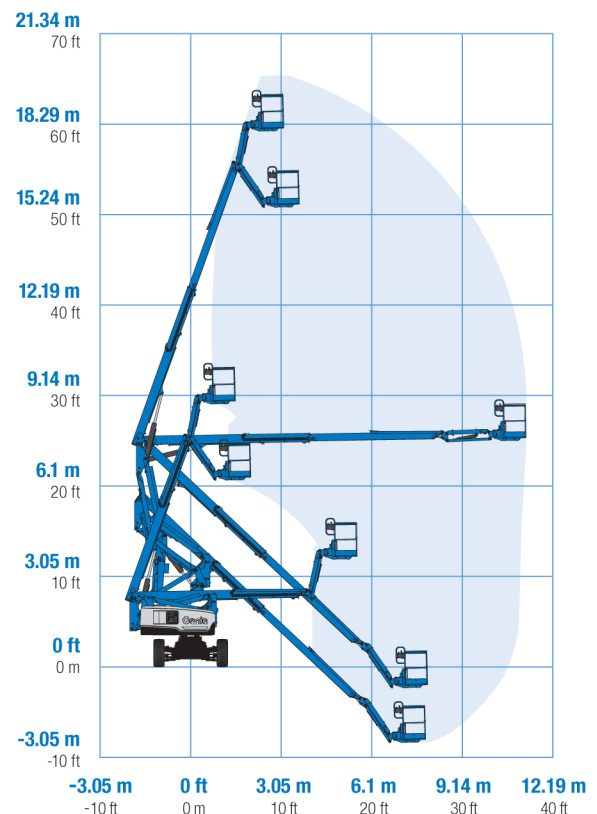
### Weight\*\*\*\*

Z-60 DC	7,530 kg	16,600 lbs
Z-60 FE	7,756 kg	17,100 lbs

### Standards Compliance

EU Directives: 2006/42/EC - Machinery (harmonized standard EN280), European Emissions Regulation (EU) 2016/1628 Stage V; 2004/108/EC (EMC); 2000/14/EC (Outdoor Noise)

### Range Of Motion Z-60 DC & Z-60 FE

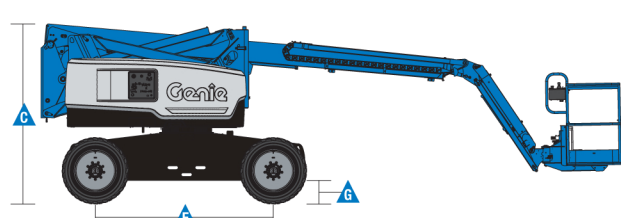
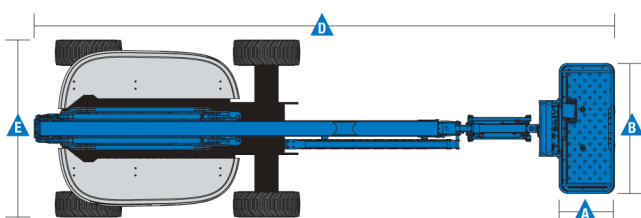


\* The metric equivalent of working height adds 2 m to platform height. U.S. adds 6 ft to platform height.

\*\* In lift mode (platform raised), the machine is designed to operate on firm, level surfaces only.

\*\*\* Gradeability applies to driving on slopes. See operators manual for details regarding slope ratings.

\*\*\*\* Weight will vary depending on options and/or country standards.





## Z-60 DC & Z-60 FE

### Features

Standard Features	Easily Configured To Meet Your Needs	Options & Accessories
<b>Measurements</b> <ul style="list-style-type: none"> <li>• 20.16 m (65 ft 7 in) working height</li> <li>• 11.15 m (36 ft 7 in) horizontal reach</li> <li>• 7.40 m (24 ft 3 in) up and over clearance</li> <li>• Up to 227 kg (500 lbs) lift capacity</li> </ul> <b>Productivity</b> <ul style="list-style-type: none"> <li>• Digital hour meter with battery charge indicator and diagnostic readout</li> <li>• 4 Wheel AC electric drive system</li> <li>• Variable speed high efficiency hydraulic power unit</li> <li>• Self-leveling platform</li> <li>• Hydraulic platform rotation</li> <li>• Proportional joystick controls</li> <li>• Telematics Ready Connector</li> <li>• Thumb rocker steering</li> <li>• Drive enable</li> <li>• Chassis tilt drive function cut-out</li> <li>• AC power cord to platform</li> <li>• Horn</li> <li>• Hour meter</li> <li>• Tilt alarm</li> <li>• Descent &amp; travel alarms</li> <li>• Flashing beacon</li> <li>• 355° non-continuous turntable rotation</li> <li>• Locking turntable covers</li> <li>• Positive traction drive</li> <li>• Dual parallelogram for vertical wall tracking</li> <li>• Lift Guard™ Contact Alarm</li> <li>• Tool Tray</li> </ul> <b>Power</b> <ul style="list-style-type: none"> <li>• 48 V DC battery pack (390Ah FLA standard on DC)</li> <li>• 48 V DC battery pack (415Ah AGM standard on FE)</li> <li>• 12V DC auxiliary power</li> <li>• 25A temperature compensated smart charge system</li> <li>• Battery charge indicator</li> <li>• Low battery voltage interrupt</li> </ul>	<b>Platform Options</b> <ul style="list-style-type: none"> <li>• Steel 1.83 m (6 ft) dual entry with side swing gate (standard)</li> <li>• Steel 2.44 m (8 ft) tri entry with side swing gate</li> </ul> <b>Jib</b> <ul style="list-style-type: none"> <li>• 1.52 m (5 ft) jib boom with 135° working range</li> </ul> <b>Engine (FE only)</b> <ul style="list-style-type: none"> <li>• 18.5 kW (24.8 hp) Kubota Stage V diesel</li> </ul> <b>Drive</b> <ul style="list-style-type: none"> <li>• 4WD Electric AC (standard)</li> </ul> <b>Axle</b> <ul style="list-style-type: none"> <li>• Active oscillation (standard)</li> </ul> <b>Tyre Options</b> <ul style="list-style-type: none"> <li>• Rough terrain non-marking foam filled (standard)</li> <li>• Rough terrain foam-filled</li> </ul>	<b>Productivity Options</b> <ul style="list-style-type: none"> <li>• Lift Guard™ Half mesh platform panels<sup>(1)</sup></li> <li>• Platform auxiliary top rail</li> <li>• Air line to platform</li> <li>• Power to platform: plug, socket, with optional Residual-current Circuit Breaker with Overcurrent protection</li> <li>• Work lights package (2 on chassis, 2 on platform)<sup>(1)</sup></li> <li>• Dual axis joystick steering<sup>(1)</sup></li> <li>• Biodegradable hydraulic oil</li> <li>• Hostile environment kit: cylinder bellows, boom wiper seals platform and ground control box covers<sup>(1)</sup></li> <li>• Chassis tilt lift function cut-out (software setting)</li> <li>• Panel cradle package<sup>(1)</sup></li> <li>• Lockable platform control box covers</li> <li>• Tow package<sup>(1)</sup></li> <li>• Operator Protective Structure<sup>(2)</sup></li> <li>• Lift Guard™ Fall Arrest Bar<sup>(2)</sup></li> </ul> <b>Power Options</b> <ul style="list-style-type: none"> <li>• 2000W 120V/60Hz, 240V/50Hz or 110V/50Hz power inverter</li> <li>• FLA (flooded lead acid) batteries (standard on DC)</li> <li>• AGM maintenance-free batteries (standard on FE)</li> <li>• Low temperature cut-out module</li> </ul>



<sup>(1)</sup> Factory-fit option only  
<sup>(2)</sup> Aftermarket only

### Kuipers Grondwerken B.V.

Haarweg 9  
 7651 KE Tubbergen

T. 0546 - 44 14 23  
 F. 0546 - 44 25 94

E. [info@kuipersgrondwerken.nl](mailto:info@kuipersgrondwerken.nl)